

# Green Lake Conference Center

Green Lake, Wisconsin



Closer Walks with God

**New logo launched in 2024**



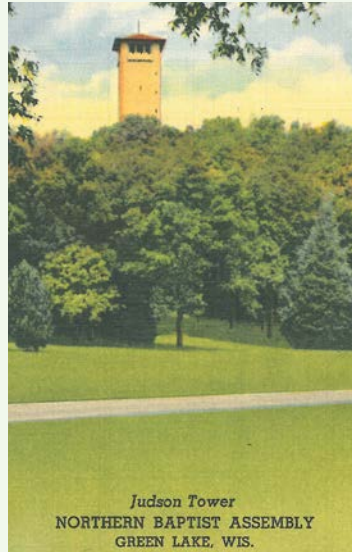
**GREEN LAKE**  
CONFERENCE CENTER

# Connecting the past, present and future at Green Lake

By Ben Mott

At Green Lake we have a spirit of connecting what God has done in the past, is doing today and is calling us to do in the future.

After our first conference in 1944 (a youth conference), Roger Fredrikson, lifetime American Baptist leader, remembers the train ride home from Fond du Lac to Chicago with the Kansas youth group: "We got to talking about raising money to buy a cross for the top of the high tower. We started collecting money among ourselves and then we had an idea. Four fellows formed a quartet, and we started singing through the cars." Roger got the attention of the passengers and announced, "We've just been to Green Lake. We're starting a Christian thing there and we're going to let these fellows sing, and then I'm going to take up an offering to buy a cross for a high tower at Green Lake." By the time they reached Chicago, they had collected \$200 of the \$700 eventually raised for the cross. Since then, the illuminated cross has been visible for miles as a symbol of those things for which the conference center stands.



*Historic post card of Judson Tower before the cross was placed in 1945*

Since the cross was added in 1945, Judson Tower has been the center of our logo. Our original logo was black and white with a three-dimensional view of the tower as seen from ground level. Over the years, different iterations of the logo followed, always including Judson Tower, usually including green until the 1990s when a red version was introduced at the time of our 50th anniversary.



In the spirit of connecting the past, present and future, we discerned that it was

time to create a refreshed logo for the journey to 100 years of our ministry. The new version returns to a green color that connects to the boathouse's green roof and the natural greens in God's creation. The logo is elemental and simple, returning to a three-dimensional aspect as seen from ground level as we experience Judson Tower (unless you're an eagle!). Our architect, Bob Staricka, drew the design and graphic designer Bill Carl created it. There is a sense of journey. The trinity of windows as you climb the tower (those tiring stairs!) take you up to the cross, and the roof points up to God our Father in Heaven.

Our young adult ministry is as vital today as in the days of Roger Fredrikson and the founding years. This magazine includes reports on the impact of 25 years of Quest youth conferencing, the SALT summer student staff and the Lilly Endowment supported Creativity in Preaching programs that included young adults giving 60 sermons in 2024.



*Davi, Eliana and Luisa, 2024 student staff (SALT)*

We have been given a great legacy in this property by the Lawsons, the Stone Company and our 80 years of facility stewardship and growth. We are improving our hotels and youth facilities for conferencing and restoring the Lawson's historic building treasures.

From the logo to conferencing to young adult ministry to facility stewardship, we invite you to join us as we connect what God has done in the past, is doing miraculously today and is calling us to do to grow our mission into the future.

# QUEST: CELEBRATING 25 YEARS OF TRANSFORMATIONAL YOUTH MINISTRY



**In 2000, under the leadership of President Ken Giacoletto, Green Lake Conference Center launched Quest. This bold new initiative focused on ministry for youth, young adults, and the leaders who serve them in churches across the country.**

Rev. Lance Percy established a foundation for Quest from 2001-2010 by hiring and equipping a young adult staff to run the program for the summer. Since 2011, Rev. Dr. Heather Henson has grown Quest in remarkable ways. Between 2000 and 2024, 10,000 people participated in an experience facilitated by the Quest staff. Participants and staff have come from multiple countries, every time zone in the contiguous United States, and three continents.

Each summer presents new opportunities to consider how, through the power of the Spirit, we might join with God in the work He is doing to reconcile the world through Christ. Over the past 25

years, we have seen God move in amazing ways. Every summer we see staff accept a call to vocational ministry, participants choose to follow Jesus and be baptized, and adult leaders become rejuvenated in their ministry and walk with Christ.



**2,000**  
Adult leaders  
over 25 years

**10,000**  
Youth participants  
over 25 years

*Throughout its 25 years of service, Quest has leaned into the idea that discipleship and formation are something that happen in community. This commitment shapes our approach to programming, staff formation and development, and youth leader/church relationships. As we step into the next chapter of ministry, it is appropriate to highlight the various aspects of Quest and how they are connected to discipleship and formation.*

## WHAT DO WE DO?



While most camps differentiate their programming based on age (e.g., one week for junior high youth and a separate week for senior high), Quest has pioneered an alternative approach in which churches are invited to bring their entire youth group to a week of Quest. When churches bring both junior and senior high youth to the same week, the community of youth in each congregation grow together through a shared experience. Shared, communal

experiences like Quest are deeply formational and have lasting impact on the discipleship journey of each participant while also strengthening the local church.

Throughout a week of Quest, the youth participate in small group Bible Studies, which are led by

the Quest staff and written by the Director of Quest. The Quest staff also lead each small group through a series of team-building activities on a low-ropes course, climbing tower, zip line, and high ropes course. In the afternoons, the youth participate in workshops that help them connect their faith with the theme for the week by working



together on a project as a church. In the evenings, the entire group participates in a worship service that is designed and led by the Quest staff. The day concludes with each youth group having its own Back Home Time. Back Home Time empowers each group to deepen relationships within the church's youth group and bring commitments inspired by the scripture for the week to live in a more vital church youth ministry for the other 51 weeks in the year.



# WHAT ABOUT STAFF?



Quest has always been heavily invested in the formation and development of young adults. In 2014, however, it enhanced this investment through Rev. Dr. Henson's doctoral work on identity development and formation in young adults. Today, the summer

staff of Quest are led through a series of experiences designed to deepen their faith in Jesus, explore their identity in Christ, and develop their leadership skills in the context of community. Through spiritual direction, small-group experiences, and opportunities for hands-on leadership, each staff member grows in their understanding of their gifts and calling.

Throughout the summer, the staff are given opportunities to lead in powerful ways. Not only do they facilitate small group Bible studies and lead multiple worship services each day, they preach, facilitate high-adventure activities, and receive training in the area of conflict mediation. With the unique combination of intentional spiritual formation and expansive opportunities to explore leadership in real-life situations, Quest is a transformational experience for those who serve on staff.

## AND CHURCHES?

That transformational experience extends into the lives of the youth leaders and churches who participate in Quest. About the experience, one youth leader remarked, "I am grateful for the experience our youth receive while at Quest but we come each and every year because of the life it breathes into my leadership as a pastor and the faithfulness it fosters in our church."

Each week, the youth leaders from all of the churches gather for a time of prayer, conversation, and equipping. The time is led by the Director of Quest who writes and facilitates the sessions in light of the needs of the leaders who attend.

Because Quest pours into the leaders and works to deepen relationships with the churches that attend, the sessions for the adult leaders are relevant to the ministry of those churches. The leaders are not merely chaperones for the youth. They are friends—fellow disciples of Jesus—who find support, encouragement, and renewal through their experience at Quest.



# HOW DID GOD MOVE IN 2024?

Summer 2024 was amazing, the staff preached 40 sermons, facilitated 44 worship services, and welcomed 25% more participants. We served churches from Colorado, Indiana, Wisconsin, Illinois, Ohio, Michigan, Kansas, and South Dakota. One student from Kansas arrived home and, after seeing the Quest staff preach all week, asked to give a sermon at their local church.

Each week we saw youth give their lives to Christ and the Spirit of the Lord move in powerful ways. In one case, a student revealed that Quest was the first time she felt safe enough to talk about her relationship with Jesus. Another student wrestled through anger at the beginning of the week and found peace at the foot of the cross during our time of communion.

Perhaps the most impactful story is of a young woman who struggles with depression and anxiety. Over the course of the year she had struggled with suicidal thoughts and was not excited to be at Quest. After a week of Bible studies, worship experiences, and activities on the high ropes course, the student experienced renewal. Upon returning home, she gave a 15-minute testimony about the work God did while she was at Quest. She remarked, "I put my faith in God...and Kody...to take a step forward in faith. God won't fail me."



**40**  
Sermons  
Preached

**44**  
Worship  
Services  
Held

# QUEST

FOR YOUTH GROUPS AND YOUTH LEADERS

CHALLENGE COURSE • ZIP LINE  
CLIMBING TOWER • GAMES  
WORSHIP • BIBLE STUDY  
TIME ON THE LAKE



**GROW CLOSER AS A GROUP, GET TO KNOW OTHERS, AND REFOCUS!  
REGISTER YOUR YOUTH GROUP: [QUESTGLCC.ORG](http://QUESTGLCC.ORG)**

**Behold, I am doing a new thing... -Isaiah 43:19**

# Compelling Preaching Project

*Explorations in creative preaching at Green Lake Conference Center*



**Preaching is important.** That's why Green Lake Conference Center partnered with the Lilly Endowment and Kairos University (Kairos.edu) to create unique opportunities for followers of Jesus to explore new ideas and experiment with creative approaches to sharing the Good News. The purpose of the Creativity in Preaching Project at Green Lake is to shape aspiring and active preachers to proclaim the gospel in more effective ways inside and outside the local church with special attention to engaging Generation Z to embrace and live out the Christian faith.

Join a community of people who still believe the Word of God is vibrant, relevant, and exciting. Two gatherings will be held each year and we can't wait for you to join us!

## Two Gatherings in 2025 • [GLCCPreaching.org](https://GLCCPreaching.org)

### Exploring Gen Z and Preaching June 16-20, 2025

Description: Through interactive sessions facilitated by experts in generational theory and formational preaching, we will explore the connection between generational dynamics and preaching.

Unique Aspects: Childcare will be provided for families who would like to attend. In addition, participants will have the opportunity to interact with members of Gen Z as they explore the topic.

Tentative Schedule: We will begin with dinner on June 16 and end with breakfast on June 20. June 17, 18, and 19 will include 1) immersive worship sessions that are led by Gen Z and connected to Green Lake's Quest ministry, 2) sessions on generational theory and preaching in the morning and afternoon, 3) time for recreation, and 4) facilitated "crucial conversations" that allow participants to explore what they are hearing and experiencing.

### Creativity in Preaching Lab August 11-15, 2025

Description: By creating space for pastors to safely explore alternative approaches to preaching, this gathering will create a unique opportunity to be exposed to new ideas and learn from other preachers. In addition, the team of facilitators will lead discussions on preaching and offer insights to emerging methods.

Unique Aspects: Each participant will have an opportunity to experiment with an alternative approach to preaching and receive guided feedback from peers.

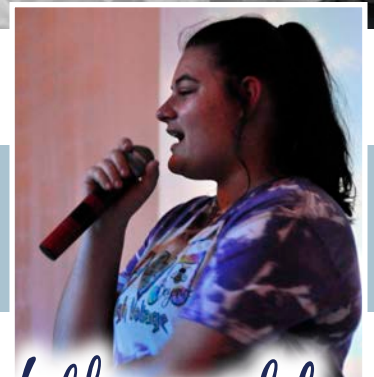
Tentative Schedule: We will begin with dinner on August 11 and end with breakfast on August 15. August 12, 13, and 14 will include 1) worship, 2) facilitated discussions on preaching, 3) time for recreation, and 4) opportunities for participants to experiment with alternative approaches to preaching.



# SALT

## SERVE AND LEARN TOGETHER SUMMER RESIDENTIAL STAFF PROGRAM AT GREEN LAKE CONFERENCE CENTER

Young adult Christians are invited to grow in their faith while living in Christian community and serving on our operations teams including Food Service, Grounds, Greenhouse, Housekeeping, Conference Services and Marketing. SALT is a combination of full-time paid work, discipleship, and servant leadership development. It includes the option to try gospel preaching for an additional stipend. It is so much fun making friends with other SALTERs, our staff and conference attendees while enjoying the magic of the grounds in the summer. International students are encouraged to apply. Come, grow and make global friendships that can last a lifetime.



*You are the salt of the earth and the light of the world.*

*Matthew 5:13-16*



**For information on becoming part of the  
SALT Team, visit our website: [glcc.org](http://glcc.org)  
Program Leader - Jen Kane**



# Closer Walks with God at Green Lake

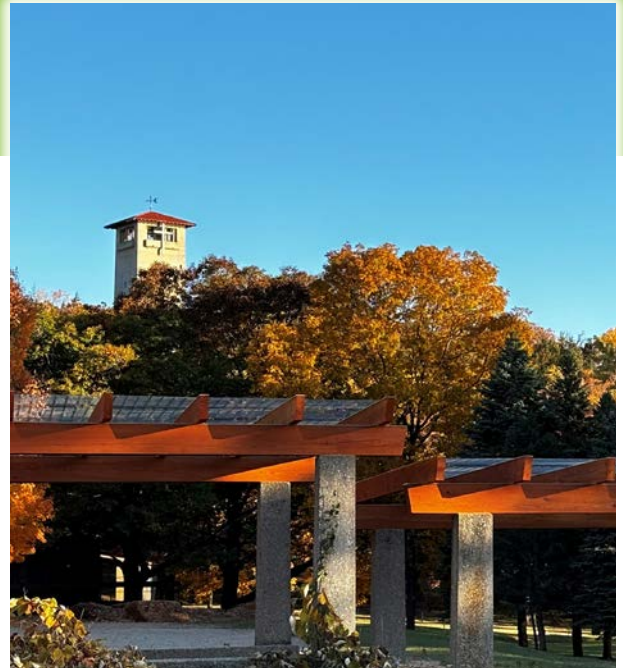


# *Grape Arbor beam structure restored*

The grape arbor has been a prominent feature of Green Lake Conference Center since it was constructed by the Lawsons in 1910. The grape arbor's beauty has drawn people as a place of spiritual reflection. President Ben Mott remarked, "One can step away from a conference and in minutes be sitting in the arbor to reflect upon how a speaker's teaching might be implemented in the ministry God has given them."

Over time, the grape arbor had become a decayed space as the wooden horizontal beams had rotted at the joints and whole sections had started to collapse. As God would have it, three donors stepped forward and gave in honor of their families' memories of walking the arbor over the past 80 years. Because of their generosity, the arbor was revived with a new beam structure with a focus on longevity and historical authenticity. Bob Staricka, the project's architect, highlighted using Douglas fir in the restoration, mirroring materials from the early 1900s. "We didn't have architectural drawings from that period," Bob noted, "but old photographs helped guide us to create a structure well within the nature of what would have been done." Staricka's attention to detail and focus on quality led him to add key features like seamless plugs that fill the bolt holes, wood sealant for weather resistance, and a galvanized metal cap that prevents water penetration. These restoration techniques, implemented by wonderful craftsmen, will ensure that the grape arbor endures for the next 50 years.

We are now seeking donors to restore the broken steps in the arbor and add subtle lighting to the walkways, and then to restore the Judson Tower and boathouse roofs. More information on our historic restoration work and that of our partner Preserve Lawson Landmarks team can be found at [LawsonLegacy.org](http://LawsonLegacy.org).



# Facility Finishes

*As we look to 2025, we ask for your support in renovating accommodations for guests, volunteers, and summer staff. In the last several years, we focused on renovating vital 'unseen' infrastructure. The time has come to update some of our lodging spaces so that they support rather than distract conferees from their Closer Walk with God while here.*



*Dan and Mike painting*



*Bauer Lodge is receiving new carpet, paint and bedding. We are seeking funds to do the same in Kern Lodge.*



*Carroll Youth Center and Robbins North and South Halls are receiving new carpet.*



*New floors, furniture, and roofs were added to many cabins and we have more to go.*

# L

LAWSON LODGE



*Martin Luther King, Jr. meeting room at Lawson Lodge was transformed and enhanced with patio doors that provide a great lake view. A deck on the other side of the patio doors is being added.*



*Large new windows and doors offering unobstructed views of the lake were installed in Staughton Hall.*

# Growth and Anticipation: Expanding Ministry at Green Lake

By Katie Boatwright, Vice President of Strategic Growth



Katie Boatwright

I recently asked a pastor friend while we were walking at Green Lake, “why do you think the veil between us and God is so thin here?” He replied, “I think it’s the many thousands of prayers offered up to God in this place throughout the decades. This ground has been soaked in the prayers of His saints.”

For 80 years people have come to encounter God in deeper ways, connect with others, and be refreshed while on these grounds. And true to His word, the Lord shows up. As Jesus said



in Matthew 18:20: “where two or three are gathered in my name, there am I in the midst of them.” The veil is thin here in this special place because of Him; He is close to us in a special way as we gather to seek Him. There is a rich and beautiful history of people encountering God in this place; and discovering God’s better version of themselves and their world through it. In this modern age, many of us long for places like this where we can retreat from the busyness of life, gather with God and with others, and be refreshed.



Since I joined the staff last summer, it’s been a delight for me to listen as donors, guests, volunteers, and staff share their personal experiences of encountering the Lord here. I think of these stories as testimonies of God’s love for and faithful care of His children.

GLCC’s ministry of hospitality on this unique property is a big calling! Thank you so much for all the ways that you have served and supported the ministry of GLCC. The legacy of changed lives that God is working out through this ministry has been in harmony with believers listening and responding to God’s call to get involved. Would you prayerfully consider how the Lord may be leading you to continue your part with us in this important work? There are many ways to support the ministry.



Katie Boatwright holds a Bachelor of Science from Clemson University and a Master of Science in Organizational Development and Leadership from Saint Joseph’s University in Philadelphia. She has held leadership roles such as Vice President of Product Development at Shopko, Vice President of Client Services at Align Life Ministries, and Chief Strategy Officer at International Ministries. In her role at GLCC, Katie’s primary focus is on expanding our Christian ministry impact, as well as growing revenue from groups, programs, and donors.

## Pray



Thank the Lord with us for all the ways He has provided, protected, and caused His ministry to be fruitful here. Ask God to lead the board and staff in faithful operation of the ministry, prepare the hearts of those who will visit to receive what He has for them here, and to increase awareness of the ministry so His work here becomes even more fruitful.

## Volunteer



We are grateful for volunteers who help us serve 40,000 conferees each year. Skills, interest and experience in specific areas of need is helpful, as well as good physical health. Most volunteers serve at least four weeks; many serve three or more months. Housing, an outstanding work environment and community with over 75 engaging volunteers who love to have fun is provided!

## Vehicle Donation

Gently used vehicles help us meet the needs across our 900 acres. The used vehicle you didn't think was worth a trade-in could be put to very good use here!

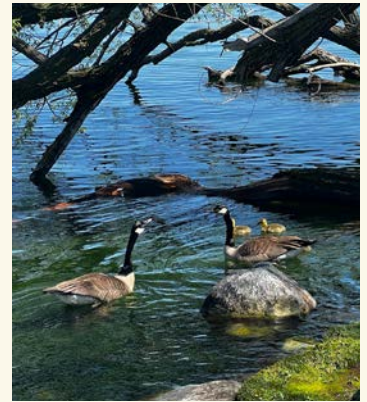
## General Support

Financial gifts for general support help us maintain and improve the facilities, provide programming, and fund scholarships that enable hundreds of pastors, lay persons, youth and adults to come for conferences who would otherwise not have been able to attend.



## Matching Gifts

Many employers have matching gift programs to encourage employees to support their favorite nonprofits. Ask your Human Resources department to see if your employer offers this benefit. It's a great way to increase your financial gift to Green Lake.



## Planned Giving



Consider making a planned gift to help build a legacy of ministry through Green Lake that reflects your values and passions and will bear fruit for future generations. For many of us, there are simple ways in which we can continue, extend, and even increase our impact that won't affect our daily budget. We can help you simplify this process. Let me know if you would like to explore this opportunity.

**Katie Boatwright**  
**Vice President of Strategic Growth**  
**KatieB@glcc.org • (920) 294-7346**



# GREEN LAKE

CONFERENCE CENTER

W2511 State Road 23 • Green Lake, Wisconsin • 54941

Non-Profit Org.

U.S. Postage

**PAID**

Permit No. 100

Ripon, WI

